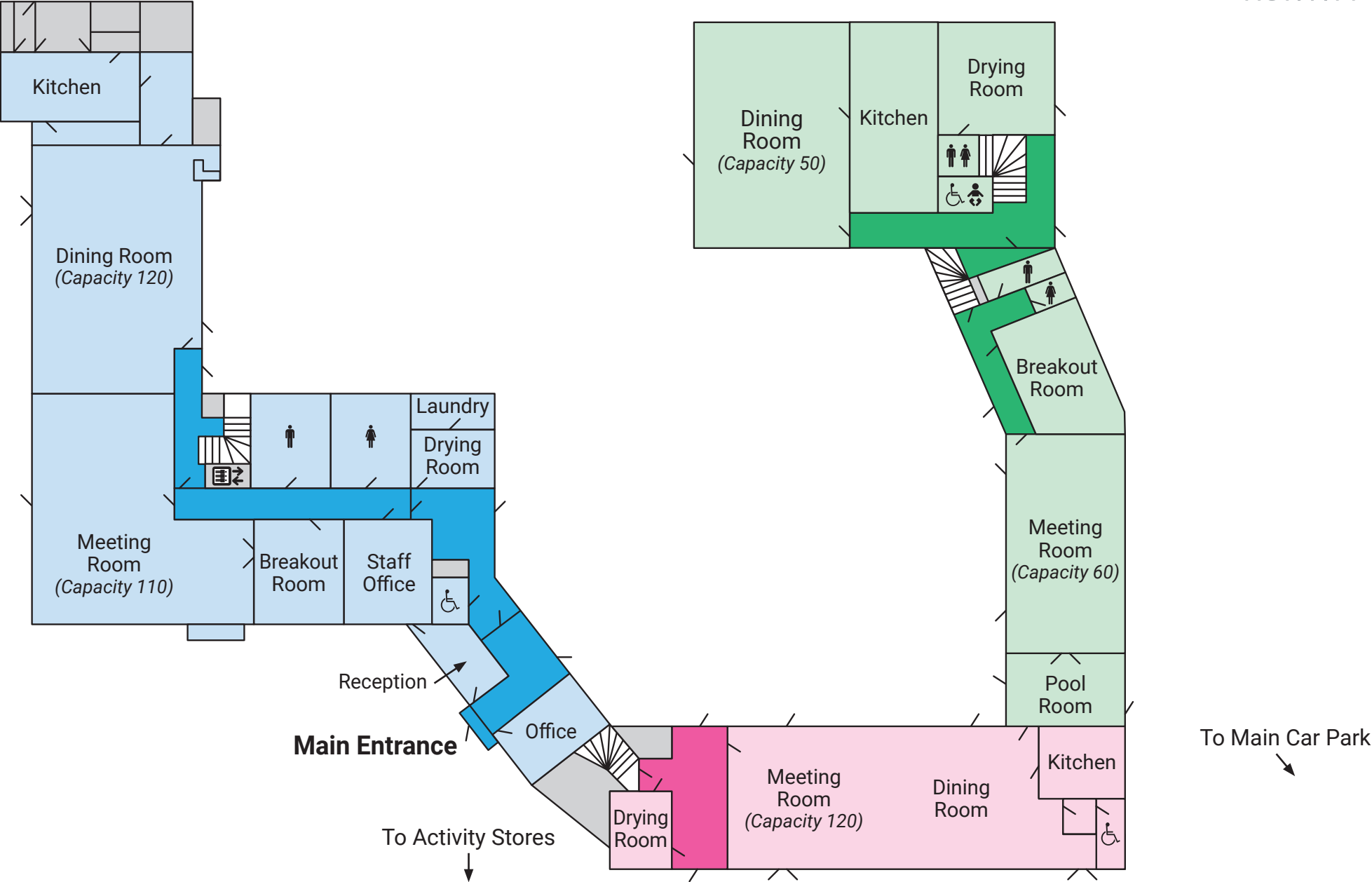


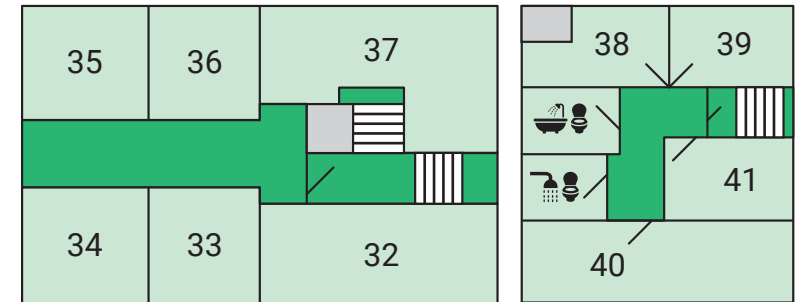
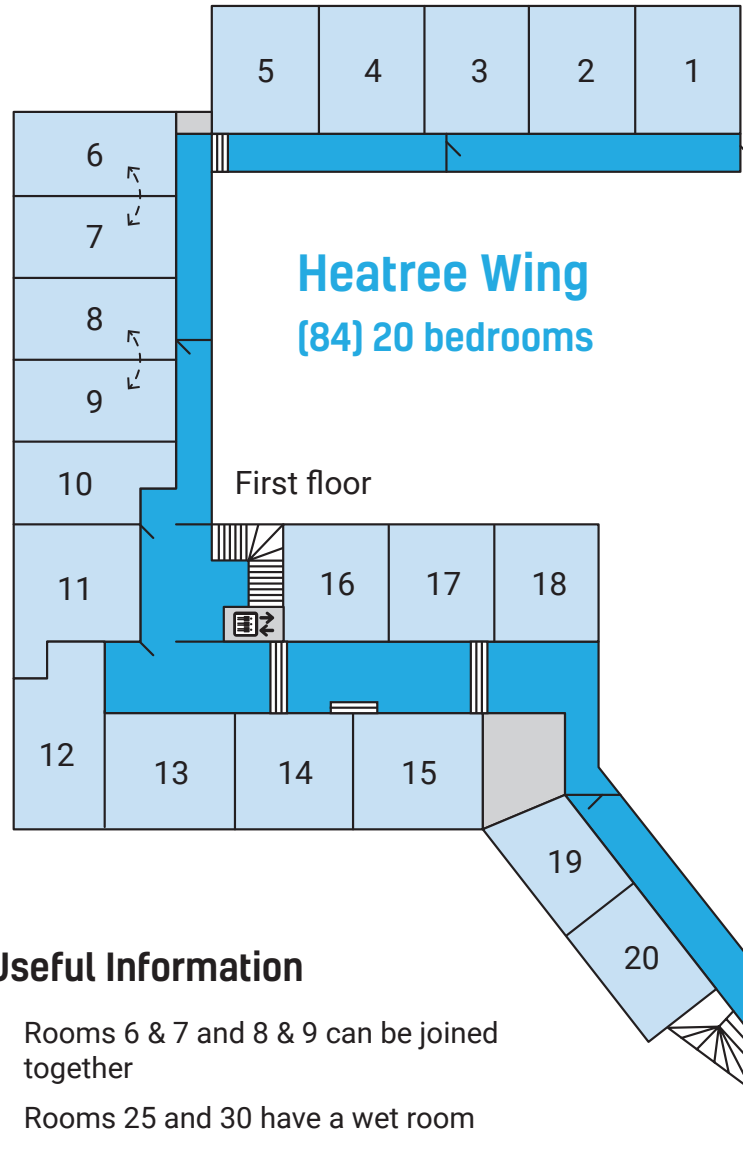
Heatree Activity Centre

Ground Floor



Room	Capacity	Configuration
1	4	2 bunks
2	4	2 bunks
3	4	2 bunks
4	4	2 bunks
5	4	2 bunks
6	4	2 bunks
7	4	2 bunks
8	4	2 bunks
9	4	2 bunks
10	4	2 bunks
11	8	4 bunks
12	6	3 bunks
13	4	2 bunks
14	4	2 bunks
15	5	2 bunks, 1 single
16	3	1 bunk, 1 single
17	3	1 bunk, 1 single
18	4	2 bunks
19	4	2 bunks
20	3	1 bunk, 1 single
21	6	3 bunks
22	4	2 bunks
23	4	2 bunks
24	6	3 bunks
25	4	2 bunks
26	4	2 bunks
27	4	2 bunks
28	4	2 bunks
29	4	2 bunks
30	3	1 bunk, 1 single
31	4	2 bunks
32	6	3 bunks
33	3	1 bunk, 1 single
34	4	2 bunks
35	4	2 bunks
36	4	2 bunks
37	7	3 bunks, 1 single
38	2	1 single, 1 double
39	3	1 bunk, 1 single
40	6	3 bunks
41	2	2 singles

Bedroom Map



Useful Information

- Rooms 6 & 7 and 8 & 9 can be joined together
- Rooms 25 and 30 have a wet room
- Rooms 38, 39 and 41 share two bathrooms (not ensuite)
- Travel cots are available upon request